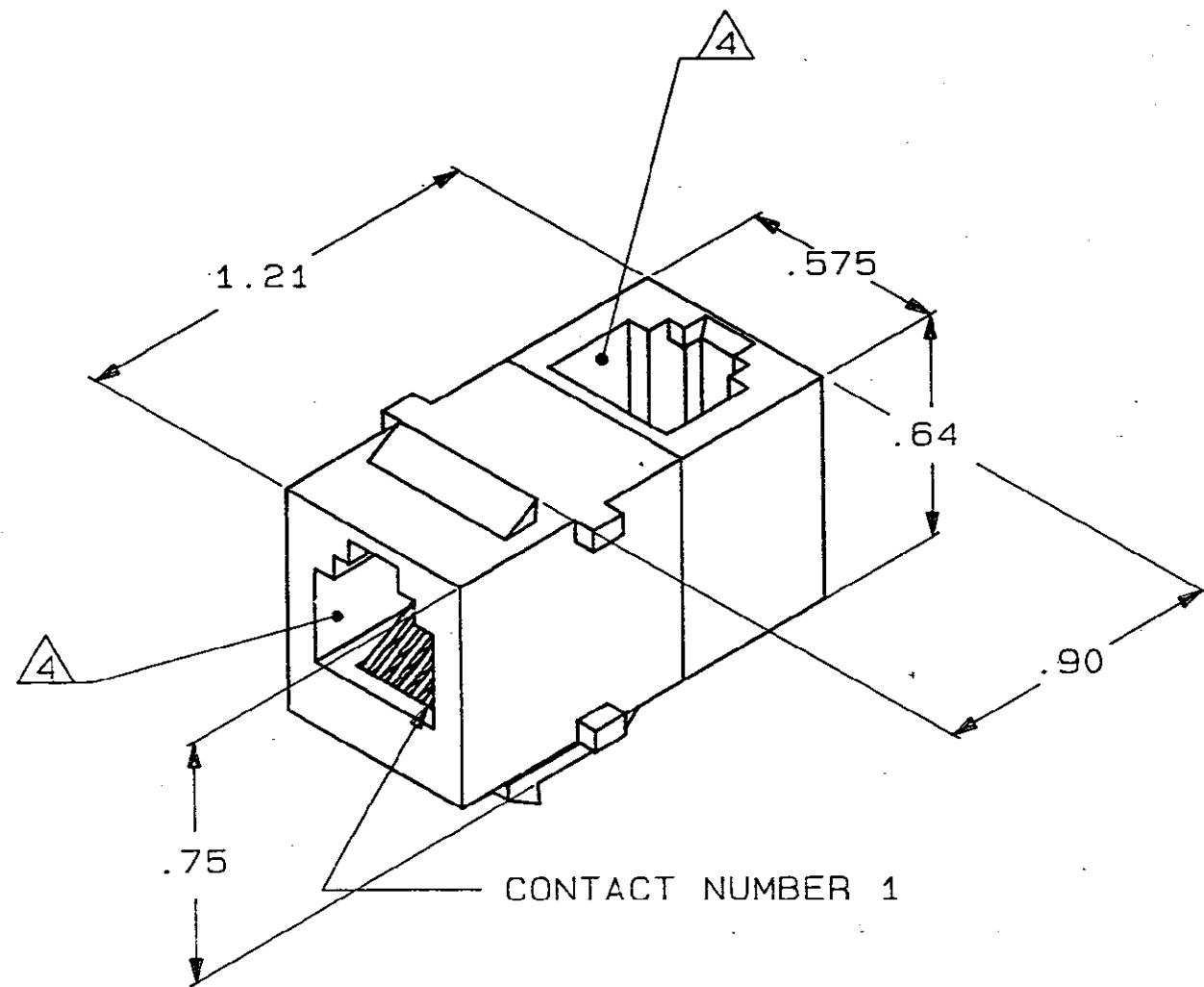
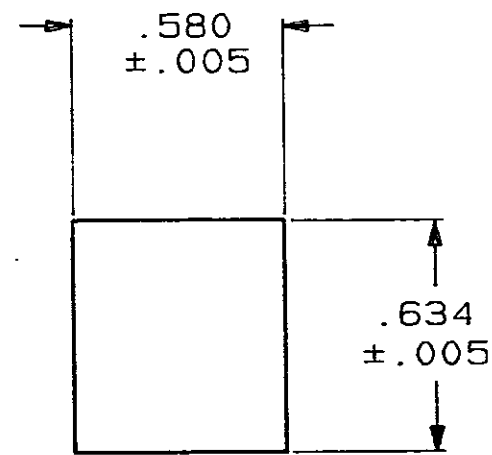
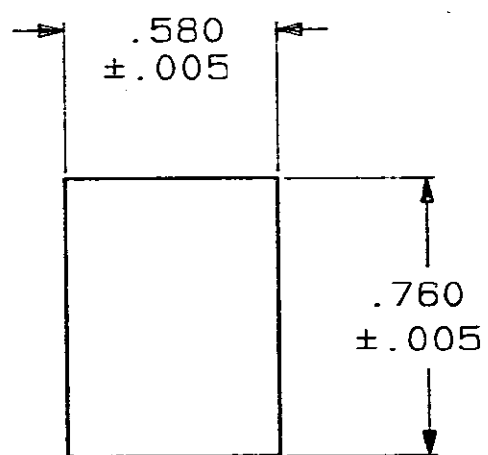
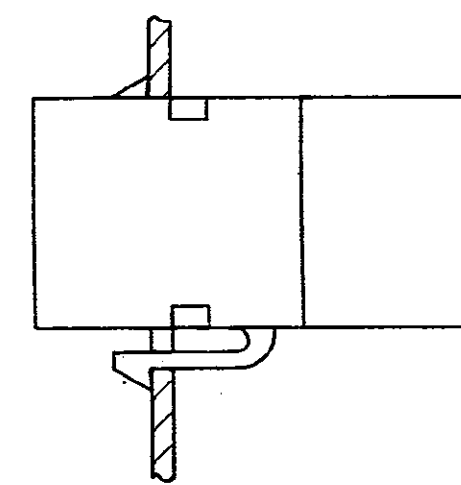
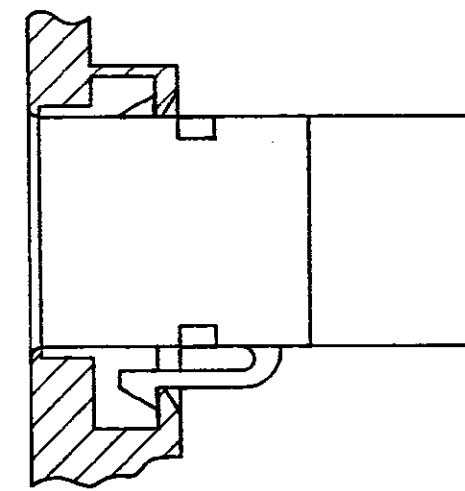


LOC	DIST	P	F	ZONE	LTR	DESCRIPTION	DATE	APPD
AA	28					REV; ECN AA-5169	7-20-88	RN



- ALL DIMENSIONS SHOWN ARE MAXIMUM UNLESS OTHERWISE SPECIFIED.
- MATERIAL:**

HOUSING - POLYPHENYLENE OXIDE, BLACK.
 TERMINAL - .018 DIA PHOSPHOR BRONZE PLATED WITH .000050 MINIMUM THICK GOLD OVER .000050 MINIMUM THICK NICKEL.
- MOUNTING PANEL THICKNESS .062 NOMINAL.
- CAVITIES SHALL CONFORM TO FCC RULES AND REGULATIONS, PART 68, SUBPART F.



RECOMMENDED PANEL CUTOUT FOR SINGLE WALL PLATE AND BACK PANEL FOR DOUBLE WALL PLATE

RECOMMENDED FRONT PANEL CUTOUT FOR DOUBLE WALL PLATE

		555049-1	
		PART NO	
DO NOT SCALE PRINT. UNLESS SPECIFIED DIMENSIONS IN INCHES TOLERANCES ON: 2 PLC DEC ± - 3 PLC DEC ± - ANGLES ± -	DR C.YATES 3-17-87	AMP INCORPORATED Harrisburg, Pa. 17105	
	CHK B.FOX 3-27-87		
MATERIAL	APPD G.FOSTER 4-1-87	NAME COUPLER ASSEMBLY, 6 POSITION, RIGHT ANGLE	
	APPD G.FOSTER 4-1-87		
FINISH	PRODUCT SPEC		
	APPLICATION SPEC	SIZE C	FSCM NO 00779
	WEIGHT -	SCALE 2:1	DRAWING NO 555049
			SHEET 1 OF 1

CUSTOMER DRAWING

555049